

SOUTH EAST MARTS SALES NEWS



Auctioneers

HAILSHAM'S HEADLINES



Auctioneers

**OVER 1800 SHEEP
AT MARKET!**

**CULL EWES SELL TO
£201**

**THURSDAY 25TH JANUARY 2024
HAILSHAM MARKET**

Market Street, HAILSHAM, Sussex. BN27 2AG

Tel:- 01323 844874

Mobile:- 07890 359622

Roger Waters' Mobile 07860 663345 (Home 01273 832360)

e-mail address ~ info@southeastmarts.co.uk

visit our web site ~ www.southeastmarts.co.uk

FARM DIRECT

TEL: RRW 07860 663345 or 01323 844874

BULL BANK

Choice of Pedigree Sussex stock bulls

Registered Hereford stock bull, good temperament

DAIRY DIRECT

Twelve Friesian In-Calf Heifers, spring calving, TB1 parish

BEEF STOCK DIRECT

Outwintered, TB1 parish

Six British Blue x early spring calving heifers

Seven Aberdeen Angus x early spring calving heifers

also Choice of Native Bred in-calf cows

Twenty seven British Blue x, Fleckvieh x, Holstein Friesian,

Aberdeen Angus x

August/September born bull calves

FODDER DIRECT

Hey there is Hay

at Horsham, Hailsham & Herstmonceux

Big Squares & Round Bales

some June made, some July made

also

Big Bale Organic Haylage
double wrapped

LAMBING HELP REQUIRED

1st April - 21st April

Accommodation in holiday cottage

Tel. Henry Grissell 07748 725902

NEXT SALE OF STORE CATTLE

Monday 12th February 2024

Present entries include-

35 Friesian and Friesian x steers, 15/18 months, TB4
from **Ian Lockwood**

16 Simmental x steers & heifers, 10 months
plus **2** British Blue x heifers, 18 months, TB4
from **S & J Feakes**

8 Charolais x steers & heifers, 18/24 months, TB4
from **Graham Larwood**

4 Purebred Aberdeen Angus steers & heifers, 13/16 months,
TB4, outwintered from **K Booker**

...many more entries anticipated

Entries close Thursday 8th February 2024



Thank you from Great Ormond Street Hospital

Great Ormond Street Hospital would like to thank you for the **£950** donation raised at the Hailsham Fatstock Show that was held on the 6th December 2023.

With your support, GOSH Charity helps to fund advanced medical equipment for treating the toughest conditions as well as support services that help make life in hospital as normal as possible for young patients and their families.

Whether it's the children at the hospital right now, or the patients of tomorrow, you are making a difference.

**On behalf of the children, families and staff at GOSH,
thank you once again.**

HAILSHAM MARKET - PRIMESTOCK DAY

PRIME STOCK – WEDNESDAY 24TH JANUARY

PRIME & CULL CATTLE (5) *Auctioneer: Roger Waters*

Bring on the Beef Shorthorns - roans, reds and whites from **John Fry's** pedigree herd in West Sussex 143p, 137p, 136p and 134p per kg and up to **£934** per head. **Savoy Brothers'** Limousin x bull weighs in at 860kg and achieves 148p per kg ie **£1272.80**. Cull cows are wanted to feed on - support the live auction ring.

CALVES (6) *Auctioneer: Roger Waters*

Calves in short supply - **MJ Matthews** has Aberdeen Angus x bulls to **£120** per head. **J & M Craig** has Aberdeen Angus x heifers to **£45** per head.

Entered for next week - 2 British Blue x and 2 Aberdeen Angus x calves

PIGS (4) *Auctioneer: Alex Moss*

Although national trade has slipped, **Derek Crush**, Ashington, still does the business at Hailsham! His good quality, heavy Large White x Gloucester Old Spot pigs ring the bell this week at 135p per kg and grossing up to **£140.40** per head, averaging **£129** each. More pigs needed please.

Please let us know what you have so we can notify our prospective buyers in advance.

THE NEXT ARDINGLY COLLECTIVE AUCTION

17th February 2024

Plants, Shrubs, Horticultural, Builders Equipment, Contractors Plant, Garage, Vintage & New Tools, Livestock & Agricultural Equipment, Ride-on & Pedestrian Mowers, Chainsaws, Garden Machinery, Generators, Tractors, Trailers etc.

at

THE SOUTH OF ENGLAND SHOWGROUND, ARDINGLY

Entries close Friday 2nd February 2024

Need an entry form? – contact us in the office on **01323 844874** or you can go online and download a form from our website at **www.southeastmarts.co.uk**

HAILSHAM MARKET - PRIMESTOCK DAY

SHEEP – 1845

A properly big entry at Hailsham, which was extremely well received by the grand company of buyers present. It is said that the trade is on the up due to the troubles in and around the Suez Canal which prevents the import of meat from Down Under!! It is certain that Donald Trump will obtain the Republican Party nomination and there is a strong likelihood that he may be the next President of the USA.

PRIME HOGGETS (879) Auctioneer: Nick Young Overall average 280.9p

A very respectable trade from first to last for all well presented meat sheep. Top call to **Rex Smith** making the journey to Hailsham from mid-Kent. In addition, **The Norton Farm Partnership's** superb offering ring the bell at **£141** per head and 308p per kilo, not forgetting the ladies **Sophie Cross** and **Kate Miles** at **£140** per head. The message is clear, make them meat and shut them up before consigning your valuable sheep to Hailsham. In the price per kilo stakes **The Norton Farm Partnership 308p; Jason West 306p; Luke Curtis 305p.**

Leading prices: Rex Smith £145, The Norton Farm Partnership £141, HJ Cross & Son £140, K Miles £140, Jason West £138, RD & DR Godden £137, Downsview Sheep £137 (twice), RFF Brown £136, D Spanton £136

Leading prices per kilo: The Norton Farm Partnership 308p, 302p, 300p, Jason West 306p, 302p, 295p, Luke Curtis 305p, AD Woolgar 304p, L Barrett 301p, C Bull 297p

STORE SHEEP (554) Auctioneer: Nick Young

It has been said before!!! Hailsham produced yet another "humdinger" of a trade with **Kevin Reed's** strong lambs at **£123** and **£119** in pole position. Attended by **R F F Brown £116**. At Hailsham big lambs = a big price. The finished price is definitely going the right way and this has improved the price of all store hoggets.

Leading prices: Kevin Reed £123, £119, £114, RFF Brown £116, £113, AGL Ainslie £115, £113, £110, I & LD Kiverstein £109, Ashdown & General Land Co £107

CULL EWES & RAMS (412) Auctioneer: Nick Young

A great entry topped by **E Killick & C Deragon £201** per head. In close attendance **J & S Harmer £149** (twice) and of course, **Rex Smith** (mid-Kent) **£124** (twice). A great run of empty Suffolk X and Texel X ewes from **Jonathan Cruise** were also very well received. *BRING YOUR EWES TO HAILSHAM. IT IS WHERE THE PRICE IS RIGHT!!*

Leading prices: E Killick & C Deragon £201, £120, £116 (twice), J & S Harmer £149 (twice), Rex Smith £124 (twice), Ellie Breach £122, G Baldock £117

***Entered for next week - 2 pygmy goat bucks, 4yr and 6yr old plus
Flock dispersal of in-lamb ewes - 60 Lleyen x ewes in-lamb to Berrichon &
Charollais rams, 60 Shetland x ewes in-lamb to Lleyen rams.***

*Please let us know exactly what you have to help us to make the best price of your stock.
For up-to-date marketing advice please call the sheep hotline 01323 844874 or the mobile
07890 359622 today. We want your sheep at Hailsham!*

SUSSEX STEEL CONSTRUCTION

DANIEL HUNTER-EVANS
MOB: 07951 438793
EMAIL: DANIEL@SUSSEXSTEELCONSTRUCTION.CO.UK



AGRICULTURAL & INDUSTRIAL BUILDINGS, REPAIRS & RENOVATIONS

Free, farmer led events and mentoring programme in the South Downs National Park

Pasture and Profit in Protected Landscapes is a free, farmer-led programme of farm walks, events, webinars and mentoring open to everyone farming in the South Downs National Park.

It is intended to support farmers who would like to explore adaptive grazing techniques and focuses on agroecological farming methods, adaptive and conservation grazing and reduction of inputs to help farmers improve business resilience.

The programme is facilitated by Pasture for Life, funded by FIPL and supported by the South Downs National Park Authority.

To find out more or to sign up please email isabella@pastureforlife.org
or call Ali on 07805 167 624



K&T
FOOTWEAR



07715 035 131

www.dealerboots.co.uk

LEADING
FOOTWEAR
SUPPLIERS
EST. 1962.



info@kandtfootwear.co.uk



www.kandtfootwear.co.uk





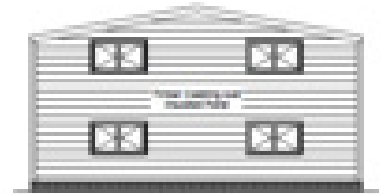
Planning | Project Management Procurement Services

We offer a fixed price
28 day Agricultural Prior
Notification Application
including:

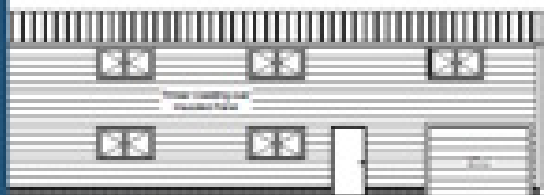
- Ordnance Survey Mapping
- Design Drawings
- Application
- Local Council Fees



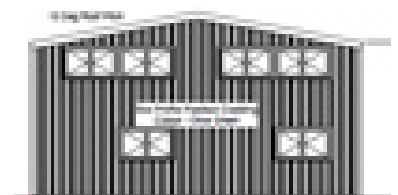
Front Elevation



Left Elevation



Right Elevation



Rear Elevation

For more information or to arrange a site visit call or email:
Nick@nfieldprojects.co.uk | 07738 703498



GRAHAM LONG

STEEL CONSTRUCTION LTD

FOR ALL YOUR AGRICULTURAL BUILDING NEEDS



TEL: 01435 865370 MOB: 07795 226296
graham@glconstruction.co.uk



CLEAR, RELEVANT & PROFESSIONAL ADVICE WHEN YOU NEED IT

Nick Young FRICS

01435 865077

e-mail: nickyoung@watsonsestates.co.uk

Farm insurance, the way it should be

We're a family-run business and pride ourselves on forging long term relationships with our farming and agricultural clients. Covering the South East, South West and Midlands, we deliver an extensive range of farm, agri business and equine policies tailored to you.

www.county-insurance.co.uk/farms

Farm & Equine **01865 844985**

General **01865 842084**

 Follow us **@County_Farm**

